



BLUE goes GREEN

MWP up to **45** bar
90 bar
130 bar
Max. working pressure



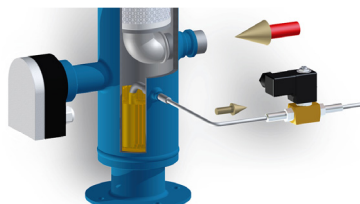
Innovative. Efficient. ... and highly reliable, of course.

ESK-Components for CO₂ applications

| Typ Type | Inhalt Volume | Anschlüsse Eintritt/ Austritt Connections Inlet/Outlet | | Max. zul. Betriebsüberdruck Max. allowable working pressure | | |
|---|------------------|---|-----------------|--|---|--|
| Ölabscheider Oil Separators ↗ 22 | | | | | | |
| OS-16-CD | 2,3l | 2 | 16 mm | 5/8" | ≤ 140°C: 53 bar -10°...-40°C: 39 bar | |
| OS-18-CD | 3,7l | | 18 mm | - | 53 bar 39 bar | |
| OS-22-CD | 5,7l | | 22 mm | 7/8" | 53 bar 39 bar | |
| OS-35/28-CD | 5,7l | | 28 mm | 1.1/8" | 53 bar 39 bar | |
| OS-35-CD | 5,7l | | 35 mm | 1.3/8" | 53 bar 39 bar | |
| OS-35FS-CD | 6,0l | | 35 mm | 1.3/8" | ≤ 140°C: 45 bar -10°...-40°C: 30 bar | |
| OS-54/42FS-CD | 21,0l | | 42 mm | 1.5/8" | 45 bar 30 bar | |
| OS-54FS-CD | 21,0l | | 54 mm | 2.1/8" | 45 bar 30 bar | |
| OS-80FX-CD | 32,0l | | 80 mm | 3.1/8" | 45 bar 30 bar | |
| Ölabscheider-Sammler Oil Separator-Reservoirs ↗ 30 | | | | | | |
| OSR-5-22 | 3,9l* | 2 | 22 mm | 7/8" | ≤ 140°C: 45 bar -10°...-40°C: 30 bar | |
| OSR-5-35/28 | 3,9l* | | 28 mm | 1.1/8" | 45 bar 30 bar | |
| OSR-5-35 | 3,9l* | | 35 mm | 1.3/8" | 45 bar 30 bar | |
| OSR-14-80/54 | 14,3l* | | 54 mm | 2.1/8" | 45 bar 30 bar | |
| OSR-14-80/67 | 14,3l* | | 67 mm | 2.5/8" | 45 bar 30 bar | |
| OSR-14-80 | 14,3l* | | 80 mm | 3.1/8" | 45 bar 30 bar | |
| OSR-21-104 | 20,5l* | | 104 mm | 4.1/8" | 45 bar 30 bar | |
| Hochleistungs-Ölabscheider High performance Oil Separators ↗ 23 | | | | | | |
| BOS2-22F | 3,1l | 2 | 22 mm | 7/8" | ≤ 140°C: 40 bar -10°...-40°C: 30 bar | |
| BOS2-35/28F | 3,8l | | 28 mm | 1.1/8" | 40 bar 30 bar | |
| BOS2-35F | 3,8l | | 35 mm | 1.3/8" | 40 bar 30 bar | |
| BOS2-54/42F | 12,5l | | 42 mm | 1.5/8" | 40 bar 30 bar | |
| BOS2-54F | 12,5l | | 54 mm | 2.1/8" | 40 bar 30 bar | |
| BOS2-80/67F | 49,0l | | 67 mm | 2.5/8" | 40 bar 30 bar | |
| BOS2-80F | 49,0l | | 80 mm | 3.1/8" | 40 bar 30 bar | |
| BOS2-35F-CDM | 4,1l | 2 | 35 mm | 1.3/8" | ≤ 140°C: 60 bar -10°...-40°C: 45 bar | |
| BOS2-54F-CDM | 12,5l | | 54 mm | 2.1/8" | 60 bar 45 bar | |
| BOS3-CDH-1ZFE | 1,2l | 1 | DN10 (Ø 17,2mm) | 2 | 10 mm 3/8" | ≤ 140°C: 130 bar ≤ 160°C: 120 bar -10°...-40°C: 97,5 bar |
| BOS3-CDH-1AFO | 4,3l | | DN25 (Ø 33,7mm) | 28 mm | 1.1/8" | 130 bar 120 bar 97,5 bar |
| BOS3-CDH-1BFO | 10,2l | | DN32 (Ø 42,4mm) | 35 mm | 1.3/8" | 130 bar 120 bar 97,5 bar |
| BOS3-CDH-1CFO | 26,3l | | DN50 (Ø 60,3mm) | 54 mm | 2.1/8" | 130 bar 120 bar 97,5 bar |

BOS3-Regelung der Ölrückführung | BOS3 Control of the oil return

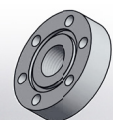
OSC-1
Ölniveauekontrolle
Oil level control



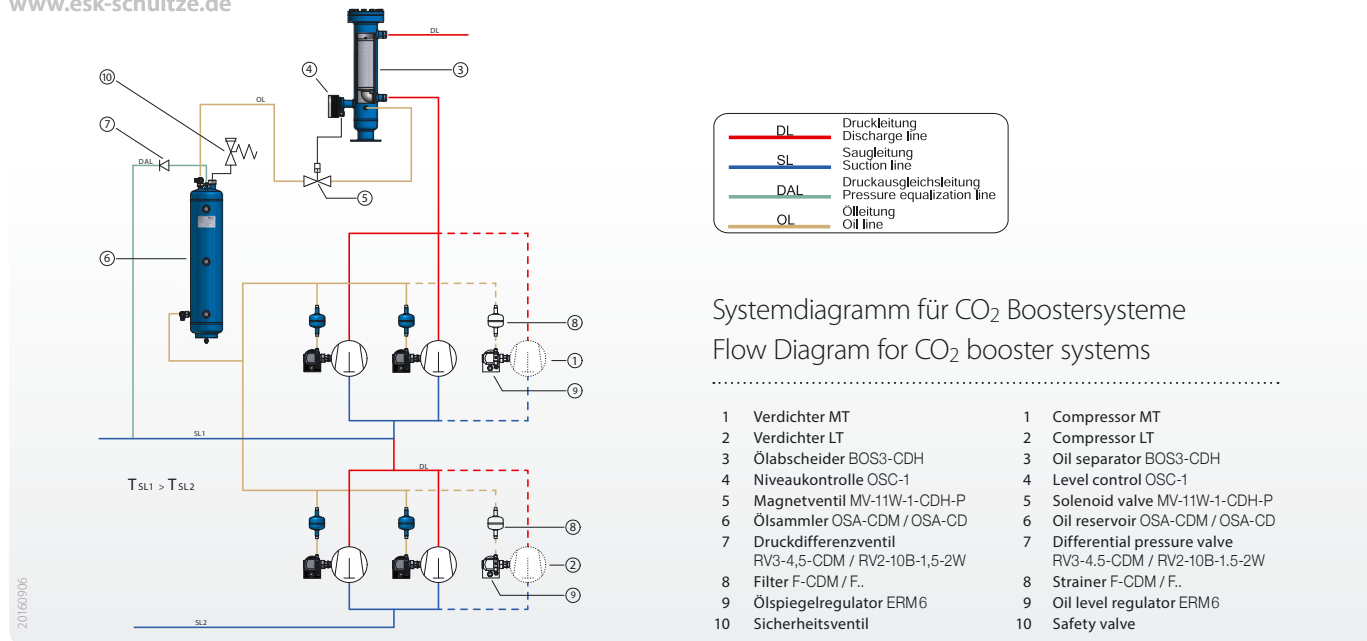
MV-11W-1-CDH-P
Magnetventilsatz für OSC-1
Solenoid valve set for OSC-1



ENC3-1/2-NPT
Füllstandskontrolle
Level control device



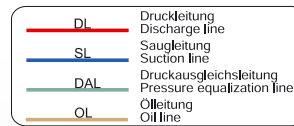
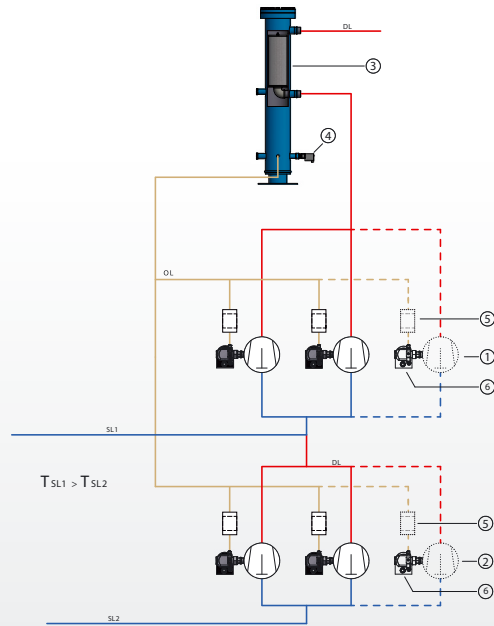
A-6 FL60-1/2-NPT
BOS3-Adapter für ENC3
BOS3 adapter for ENC3



- | | |
|---|--|
| 1 Verdichter MT | 1 Compressor MT |
| 2 Verdichter LT | 2 Compressor LT |
| 3 Ölabscheider BOS3-CDH | 3 Oil separator BOS3-CDH |
| 4 Niveauekontrolle OSC-1 | 4 Level control OSC-1 |
| 5 Magnetventil MV-11W-1-CDH-P | 5 Solenoid valve MV-11W-1-CDH-P |
| 6 Ölsammler OSA-CDM / OSA-CD | 6 Oil reservoir OSA-CDM / OSA-CD |
| 7 Druckdifferenzventil RV3-4,5-CDM / RV2-10B-1,5-2W | 7 Differential pressure valve RV3-4.5-CDM / RV2-10B-1.5-2W |
| 8 Filter F-CDM / F.. | 8 Strainer F-CDM / F.. |
| 9 Ölspiegelregulator ERM6 | 9 Oil level regulator ERM6 |
| 10 Sicherheitsventil | 10 Safety valve |

| Type | Inhalt Volume | Anschlüsse Eintritt / Austritt Connections Inlet / Outlet | Max. zul. Betriebsüberdruck Max. allowable working pressure |
|---|------------------|--|--|
| Hochleistungs-Ölabscheider-Sammler High performance Oil Separator-Reservoirs ➔ 32 | | | |
| BOS2-R-22F | 2,2l* | 2 22 mm 7/8" | ≤ 140°C: 40 bar -10°...-40°C: 30 bar |
| BOS2-R-35/28F | 3,1l* | 28 mm 1.1/8" | 40 bar 30 bar |
| BOS2-R-35F | 3,1l* | 35 mm 1.3/8" | 40 bar 30 bar |
| BOS2-R-54/42F | 6,7l* | 42 mm 1.5/8" | 40 bar 30 bar |
| BOS2-R-54F | 6,7l* | 54 mm 2.1/8" | 40 bar 30 bar |
| BOS2-R-80/67F | 20,0l* | 67 mm 2.5/8" | 40 bar 30 bar |
| BOS2-R-80F | 20,0l* | 80 mm 3.1/8" | 40 bar 30 bar |
| BOS3-R-CDH-1AF | 4l* | 1 DN25 (Ø 33,7 mm) 2 28 mm 1.1/8" | ≤ 140°C: 130 bar ≤ 160°C: 120 bar -10°...-40°C: 97,5 bar |
| BOS3-R-CDH-1BF | 8l* | DN32 (Ø 42,4 mm) 35 mm 1.3/8" | 130 bar 120 bar 97,5 bar |
| BOS3-R-CDH-1CF | 14l* | DN50 (Ø 60,3 mm) 54 mm 2.1/8" | 130 bar 120 bar 97,5 bar |
| Ölsammler Oil Reservoirs ➔ 34 | | | |
| OSA-5,7-CD | 5,7l | 3 10 mm V 3/8" V | ≤ 100°C: 45 bar -10°...-40°C: 30 bar |
| OSA-9,6-CD | 9,6l | 10 mm V 3/8" V | 45 bar 30 bar |
| OSA-21-CD | 21,0l | 22 mm V 7/8" V | 45 bar 30 bar |
| OSA-6-CDM | 6,1l | 10 mm V 3/8" V | ≤ 100°C: 60 bar -10°...-40°C: 45 bar |
| OSA-12-CDM | 12,1l | 10 mm V 3/8" V | 60 bar 45 bar |
| OSA-21-CDM | 21,0l | 16 mm V 5/8" V | 60 bar 45 bar |
| OSA-32-CDM | 32,0l | 16 mm V 5/8" V | 60 bar 45 bar |
| OSA-49-CDM | 49,0l | 16 mm V 5/8" V | 60 bar 45 bar |
| OSA-5-CDH | 5,0l | 1 Ø 10x2 schweißen / welding 2 (löt/solder: 6 mm) | ≤ 100°C: 130 bar -10°...-40°C: 97,5 bar |
| OSA-12-CDH | 12,0l | Ø 10x2 schweißen / welding (löt/solder: 6 mm) | 130 bar 97,5 bar |
| OSA-23-CDH | 23,0l | Ø 10x2 schweißen / welding (löt/solder: 6 mm) | 130 bar 97,5 bar |
| Druck- und Rückschlagventile (Auswahl) Pressure and Check Valves (sample) ➔ 39 | | | |
| RV2-10B/2,5 | | 4 5/8"-18 UNF 5 10 mm Bördel / 3/8" flare | ≤ 100°C: 53 bar |
| RV3-4,5-CDM | | 5/8"-18 UNF 10 mm Bördel / 3/8" flare | 60 bar |
| RV3-8-CDM | | 5/8"-18 UNF 10 mm Bördel / 3/8" flare | 60 bar |
| RV3-4,5-CDH | | 1/4"-18 NPTF Swagelok: SS-6M0-6 | 130 bar |
| Filtertrockner Filter drier ➔ 50 | | | |
| FT1-16-CDM | 1,5l | 2 16 mm 5/8" | ≤ 70°C: 60 bar -10°...-50°C: 45 bar |
| FT1-22-CDM | 1,5l | 22 mm 7/8" | 60 bar 45 bar |
| FT1-28-CDM | 1,5l | 28 mm 1.1/8" | 60 bar 45 bar |
| FT2-22-CDM | 2,8l | 22 mm 7/8" | 60 bar 45 bar |
| FT2-28-CDM | 2,8l | 28 mm 1.1/8" | 60 bar 45 bar |
| FT2-35-CDM | 2,8l | 35 mm 1.3/8" | 60 bar 45 bar |
| FT2-42-CDM | 2,8l | 42 mm 1.5/8" | 60 bar 45 bar |
| FT1-DN25-CDH | 1,5l | 1 DN25 (Ø 33,7 mm) 2 28 mm 1.1/8" | ≤ 70°C: 130 bar -10°...-50°C: 97,5 bar |
| FT2-DN25-CDH | 2,6l | DN25 (Ø 33,7 mm) 28 mm 1.1/8" | 130 bar 97,5 bar |

| | | | |
|--|-----------------------------|---|-------------------------------|
| 1 Für Schweißer: Rohrdurchmesser außen | 4 Anschluss zum Ölsammler | 1 Welding: Tube outside diameter | 4 Connection to oil reservoir |
| 2 Lötanschluss: Durchmesser Innenmaß | 5 Anschluss zur Saugleitung | 2 Solder connection ODS | 5 Connection to suction line |
| 3 OSA: V = Rotalock-Absperrentil, Löt | * Volumen des Sammlers | 3 OSA: V = Rotalock shut-off valve, ODS | * Volume of reservoir |



Ölreguliersystem mit Hochdruck-Ölreservoir
für CO₂-Boostersysteme

Oil control system with high pressure oil reservoir
for CO₂-booster systems

- | | |
|--|--------------------------------------|
| 1 Verdichter MT | 1 Compressor MT |
| 2 Verdichter LT | 2 Compressor LT |
| 3 Ölabscheider-Sammler BOS3-R-CDH | 3 Oil separator-reservoir BOS3-R-CDH |
| 4 Minimal-Füllstandskontrolle ENC3-1/2-NPT | 4 Low level control ENC3-1/2-NPT |
| 5 Filter | 5 Strainer |
| 6 Ölspiegelregulator ERM6-CDH | 6 Oil level regulator ERM6-CDH |

| Typ Type | Inhalt Volume | Anschlüsse Eintritt / Austritt Connections Inlet / Outlet | Max. zul. Betriebsüberdruck Max. allowable working pressure |
|--|------------------|--|--|
| Flüssigkeitsabscheider I Suction Line Accumulators ➔ 52 | | | |
| FA2-12-CD | 2,3l | 2 12 mm 1/2" | ≤ 100°C: 45 bar -10°...-50°C: 30 bar |
| FA2-16-CD | 2,3l | 16 mm 5/8" | 45 bar 30 bar |
| FA2-18-CD | 2,3l | 18 mm - | 45 bar 30 bar |
| FA2-22-CD | 2,3l | 22 mm 7/8" | 45 bar 30 bar |
| FA2-28-CD | 2,3l | 28 mm 1.1/8" | 45 bar 30 bar |
| FA2-35-CD | 5,7l | 35 mm 1.3/8" | 45 bar 30 bar |
| FA-12U-CDH | 0,8l | 12 mm 1/2" (on request) | ≤ 100°C: 100 bar -10°...-50°C: 75 bar |
| FA-16U-CDH | 2,0l | 16 mm 5/8" | 100 bar 75 bar |
| FA-22U-CDH | 2,5l | 22 mm 7/8" | 100 bar 75 bar |

| Typ Type | Inhalt Volume | Anschlüsse Eintritt / Austritt Connections Inlet / Outlet | Max. zul. Betriebsüberdruck Max. allowable working pressure |
|--|------------------|--|--|
| Geräuschdämpfer (Auswahl) Discharge Line Mufflers (Sample) ➔ 64 | | | |
| GD-10 | 0,3l | 2 10 mm 3/8" | ≤ 140°C: 60 bar -10°...-40°C: 45 bar |
| GD-12 | 0,3l | 12 mm - | 60 bar 45 bar |
| GD-1/2" | 0,3l | - 1/2" | 60 bar 45 bar |
| GD-15 | 0,3l | 15 mm - | 60 bar 45 bar |
| GD-16 | 0,3l | 16 mm 5/8" | 60 bar 45 bar |
| GD-18 | 0,3l | 18 mm - | 60 bar 45 bar |
| GD-3/4" | 0,3l | - 3/4" | 60 bar 45 bar |
| GDS-22 | 0,3l | 22 mm 7/8" | 60 bar 45 bar |
| GD-22 | 1,1l | 22 mm 7/8" | ≤ 140°C: 45 bar -10°...-40°C: 30 bar |
| GD-28 | 1,1l | 28 mm 1.1/8" | 45bar 30 bar |
| GDS-35 | 1,1l | 35 mm 1.3/8" | 45bar 30 bar |
| GD-35 | 2,3l | 35 mm 1.3/8" | 45bar 30 bar |
| GD-42 | 2,3l | 42 mm 1.5/8" | 45bar 30 bar |
| GD-54 | 3,6l | 54 mm 2.1/8" | 45bar 30 bar |
| GD-28-CDH | 1,5l | 1 DN25 (Ø 33,7mm) 2 28mm 1.1/8" | ≤ 150°C: 130 bar ≤ 160°C: 120 bar -10°...-40°C: 97,5 bar |

ERM6 Ölspiegelregulator Oil level regulator

Neu: Füllalgorithmus selbstadaptierend
New: Self-learning filling algorithm

- Bis zu **130 bar** in der Ölrückführung
- Arbeitsdruckdifferenz: **1,5 bar ... 100 bar**
- Betriebsdruck: **60 bar** bzw. **130 bar** (Typ ERM5-CDH)
- Mit Flansch-, Gewindeanschluss und mit Adapter erhältlich
 - New: Up to **130 bar** in the oil return line
 - Working pressure differences: **1.5 bar ... 100 bar**
 - MWP: **60 bar** resp. **130 bar** (type ERM5-CDH)
 - Connectable via flange, thread or adapters



LEVEL CONTROL MADE EASY

| Typ Type | Inhalt Volume | Anschlüsse Eintritt / Austritt Connections Inlet / Outlet | Max. zul. Betriebsüberdruck Max. allowable working pressure |
|---|--|--|--|
| Flüssigkeitssammler Liquid Receivers 📖 59 | | | |
| S-3,7-CD | 3,7l | 2 12 mm** | ≤ 50°C: 45 bar -10°...-40°C: 30 bar |
| S-5,7-CD | 5,7l | 12 mm** | 45 bar |
| SGS-21W-CDM | 21l | 2 22 mm 7/8" | ≤ 100°C: 60 bar -10°...-40°C: 45 bar |
| SGS-32W-CDM | 32l | 22 mm 7/8" | 60 bar 45 bar |
| SGS-49W-CDM | 49l | 22 mm 7/8" | 60 bar 45 bar |
| SGS-75W-CDM | 75l | 1 DN32 (Ø 42,4 mm) 2 35 mm 1.3/8" | 60 bar 45 bar |
| SGS-98W-CDM | 98l | DN32 (Ø 42,4 mm) 35 mm 1.3/8" | 60 bar 45 bar |
| SGS-80-PS90-V1 | 80l | 1 DN25 (Ø 33,7 mm) 2 28 mm 1.1/8" | ≤ 50°C: 90 bar -10°...-40°C: 67,5 bar |
| SGS-106-PS90-V1 | 106l | DN25 (Ø 33,7 mm) 28 mm 1.1/8" | 90 bar 67,5 bar |
| SGS-165-PS90-V1 | 165l | DN32 (Ø 42,4 mm) 35 mm 1.3/8" | 90 bar 67,5 bar |
| SGS-250-PS90-V1 | 250l | DN32 (Ø 42,4 mm) 35 mm 1.3/8" | 90 bar 67,5 bar |
| Filter (Auswahl) Strainers (sample) 📖 49 | | | |
| F-10L-CDM | 0,2l | 2 10 mm 3/8" | ≤ 70°C: 60 bar -10°...-40°C: 45 bar |
| F-DN10-CDM | 0,2l | 1 DN 10 (Ø 17,2 mm) | 60 bar 45 bar |
| F-10L-CDH | 0,2l | 2 10 mm 3/8" | ≤ 65°C: 100 bar -10°...-40°C: 75 bar |
| FF-10B | 0,34l | 2 10 mm 3/8" | ≤ 70°C: 53 bar -10°...-40°C: 39 bar |
| FF-16B | 0,34l | 16 mm 5/8" | 53 bar 39 bar |
| Schauglasadapter Sight glass adapters 📖 75 | | | |
| SSG-SW10-T-CDH | | Swagelok: SS-10M0-6 | ≤ 160°C: 150 bar -10°...-40°C: 112,5 bar |
| SSG-16/DN15-T-CDH | | 1 DN15 (Ø 21,3 mm) 2 16 mm 5/8" | 150 bar 112,5 bar |
| SSG-22/DN20-T-CDH | | DN20 (Ø 26,9 mm) 22 mm 7/8" | 150 bar 112,5 bar |
| SSG-28/DN25-T-CDH | | DN25 (Ø 33,7 mm) 28 mm 1.1/8" | 150 bar 112,5 bar |
| SSG-35/DN32-T-CDH | | DN32 (Ø 42,4 mm) 35 mm 1.3/8" | 150 bar 112,5 bar |
| Füllstandskontrolle/-regelung Level control 📖 68 | | | |
| OSC-1 | Ölniveauekontrolle für BOS3-CDH / Oil level control for BOS3-CDH | | |
| MV-11W-1-CDH-P | Magnetventilsatz für OSC-1 / Solenoid valve set for OSC-1 | | 150 bar |
| ENC3-M20-.. | Füllstandskontrolle mit 1.1/8", 1.1/4" oder 1.3/4"-Anschluss / Level control device with an 1.1/8", 1.1/4" or 1.3/4"-connection | | 60 bar |
| ENC3-..-NPT | Füllstandskontrolle mit 1/2" oder 3/4"-NPT-Buchse / Level control device with an 1/2" or 3/4"-NPT-fitting | | 130 bar |
| LC-L-.. | Minimal-Füllstandskontrolle / Low level control device | | 60 bar |
| LC-L-MA-CDH | ... für SGS-PS90 / ... for SGS-PS90 | | 130 bar |
| LC-H-.. | Maximal-Füllstandskontrolle / High level control device | | 60 bar |
| LC-H-MA-CDH | ... für SGS-PS90 / ... for SGS-PS90 | | 130 bar |
| 1 | Für Schweißer: Rohrdurchmesser außen | | 1 Welding: Tube outside diameter |
| 2 | Lötanschluss: Durchmesser Innenmaß | | 2 Solder connection: ODS |
| ** Typ S-CD: 1/2"-Anschluss auf Anfrage, Austritt mit Rotalock-Absperrventil, Löt | | | ** type S-CD: 1/2"-connection on request, outlet with Rotalock shut-off-valve, ODS |



Ausführliche Informationen zu diesen und weiteren Komponenten finden Sie in unserem Produktkatalog.

Auf Wunsch erhalten Sie die aktuelle Ausgabe

- per Post (eine kurze Nachricht genügt)
- als Pdf-Download über unsere Internetseite (ca. 7 MB)

Our catalogue »ESK Products« includes detailed information about all ESK products.

Get your free copy:

- via postal service (drop us a line, please)
- download the pdf-file from our website (ra. 7 MB)



Quality Products - Made in Germany

ESK Schultze GmbH & Co. KG

Parkallee 8
D-16727 Velten

+49 (0) 3304 3903 0
 +49 (0) 3304 3903 34
 info@esk-schultze.de

Für technische Fragen stehen wir Ihnen gern zur Seite:
For technical questions contact us please:

Salim Afalou: afalou@esk-schultze.de
Daniel Danne: d.danne@esk-schultze.de
www.esk-schultze.de

Änderungen vorbehalten!
Subject to modification!